



**TECHNOPOL SA**  
ENERGY SAVING MATERIALS

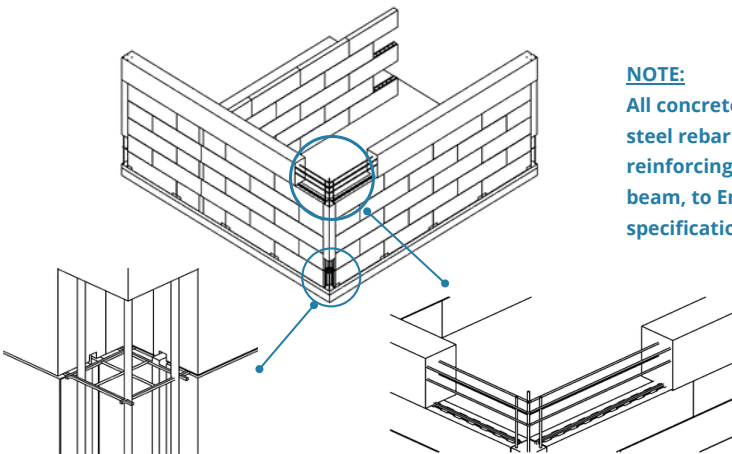
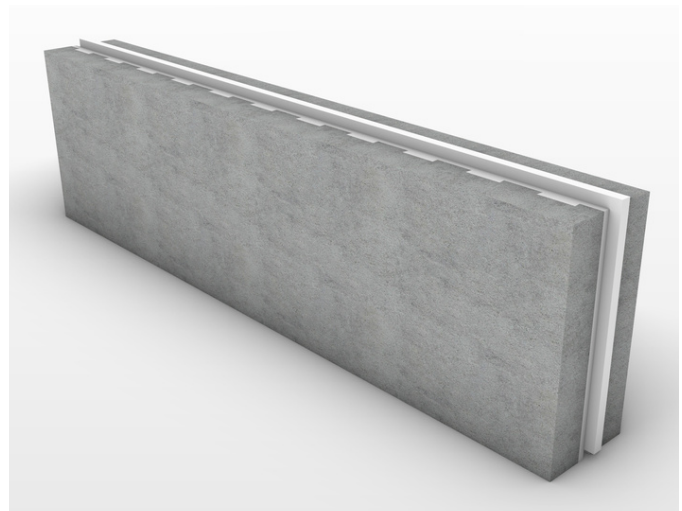
# LiteCore™ Bricks for Non-Structural Walling

## Product description

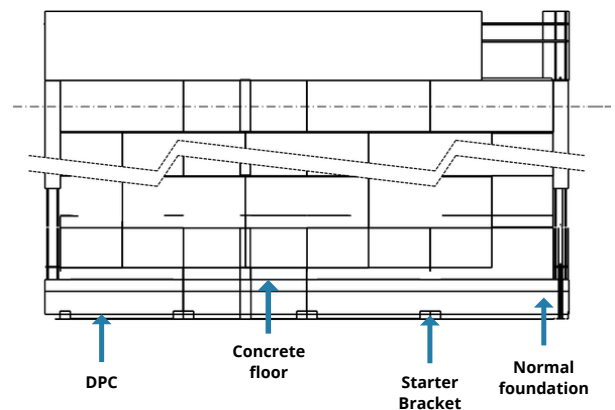
The LiteCore System is a strong, durable and quick-to-install energy-saving system. This system is well-engineered and has a strong, lightweight core made from recycled EPS and eco-friendly concrete. This system can easily be adopted for use in more conventional building construction. It requires little skills set adjustments in terms of installation and easily delivering an energy-efficient, well insulated building.

## LiteCore™ Brick Properties:

Properties	Unit	Value
Compressive Strength (@400 density)	>1.0	MPa
Size	1200x340Hx 150/100mm	
Mass per brick	20-22	kg
R-Value (150mm Brick)	>2.2	
Mortar Rate	3-5	kg/m <sup>2</sup>



**NOTE:**  
All concrete flooring, steel rebar reinforcing and ring beam, to Engineering specifications.



## Specifications

- Conventional structural elements up to slab level.
- DPC strip on slab and starter brackets anchored into slab, the roof and structural mullions. This to secure LiteCore block wall when filling in.
- Ring beam and mullions externally covered with EHD FRCel™ EPS.
- Thin joint polymeric mortar between LiteCore bricks.
- Conventional method to install services.
- Lightweight and polymeric plaster and fibre glass mesh rendered on brick surfaces to finish.
- Fire resistance: 120 min, SANS 10177-2, SANS 10400 Part T and SANS 428 compliant.
- Energy savings: SANS 204 compliant.

## Benefits

- Minimal labour required using hand tools.
- Excellent fire properties.
- Compatible with all roof types.
- Best possible thermal comfort - Energy saving.
- Water, mould and noise resistant.
- Unaffected by weather conditions - breathing walls and self cooling.